



LOCK-IN AMPLIFIER MODULE

LI5501 / LI5502

USB Driver Installation Manual

DA00099567-001

LOCK-IN AMPLIFIER MODULE

LI5501 / LI5502

USB Driver Installation Manual

———— Preface ————

Thank you very much for purchasing our “**LI5501 / LI5502 LOCK-IN AMPLIFIER MODULE**”

This manual describes how to install the USB driver for external control of the LI5501 / LI5502 via USB interface.

● The chapter of this manual are described below.

1. OUTLINE

This chapter describes the operating environment of the LI5501 / LI5502 USB driver and configuration of the installation files.

2. INSTALLATION

This chapter describes how to install the LI5501 / LI5502 USB driver.

This driver is for the LI5501 / LI5502 only, and cannot be used for controlling other measurement instruments.

CONTENTS

	Page
1. OUTLINE	1-1
1.1 Overview	1-2
1.2 System requirements	1-2
1.3 File Configuration	1-2
2. INSTALLATION	2-1
2.1 Connecting with personal computer	2-2
2.2 Installation (Windows 7 / Windows 8.1)	2-3
2.3 Installation (Windows 10)	2-8

1. OUTLINE

1.1 Overview	1-2
1.2 System requirements	1-2
1.3 File configuration.....	1-2

1.1 Overview

Install the USB Driver according to this manual before using the LI5501 / LI5502 via USB.

1.2 System requirements

[Personal computer]

Before installing this driver, make sure that your system meets the following requirements.

OS	Microsoft Windows 7	32-bit / 64-bit
	Microsoft Windows 8.1	32-bit / 64-bit
	Microsoft Windows 10	32-bit / 64-bit
USB port	USB 2.0	

[USB cable]

USB 2.0, Type A Plug to Type B Plug

1.3 File configuration

There are two folders below.

- “NF_LI5501_CommClass” (for 1-channel model)
- “NF_LI5502_CommClass” (for 2-channel model)

Each folder contains the following files (“x” indicates the last number of the model).

- USB driver installation definition file (inf file)
NF_LI550x_CommClass.inf
It is used when installing the USB driver.
- USB driver security catalog file (cat file)
NF_LI550x_CommClass.cat
It is used when installing the USB driver.

2. INSTALLATION

2.1 Connecting with personal computer.....	2-2
2.2 Installation (Windows 7 / Windows 8.1)	2-3
2.3 Installation (Windows 10)	2-8

2.1 Connecting with personal computer

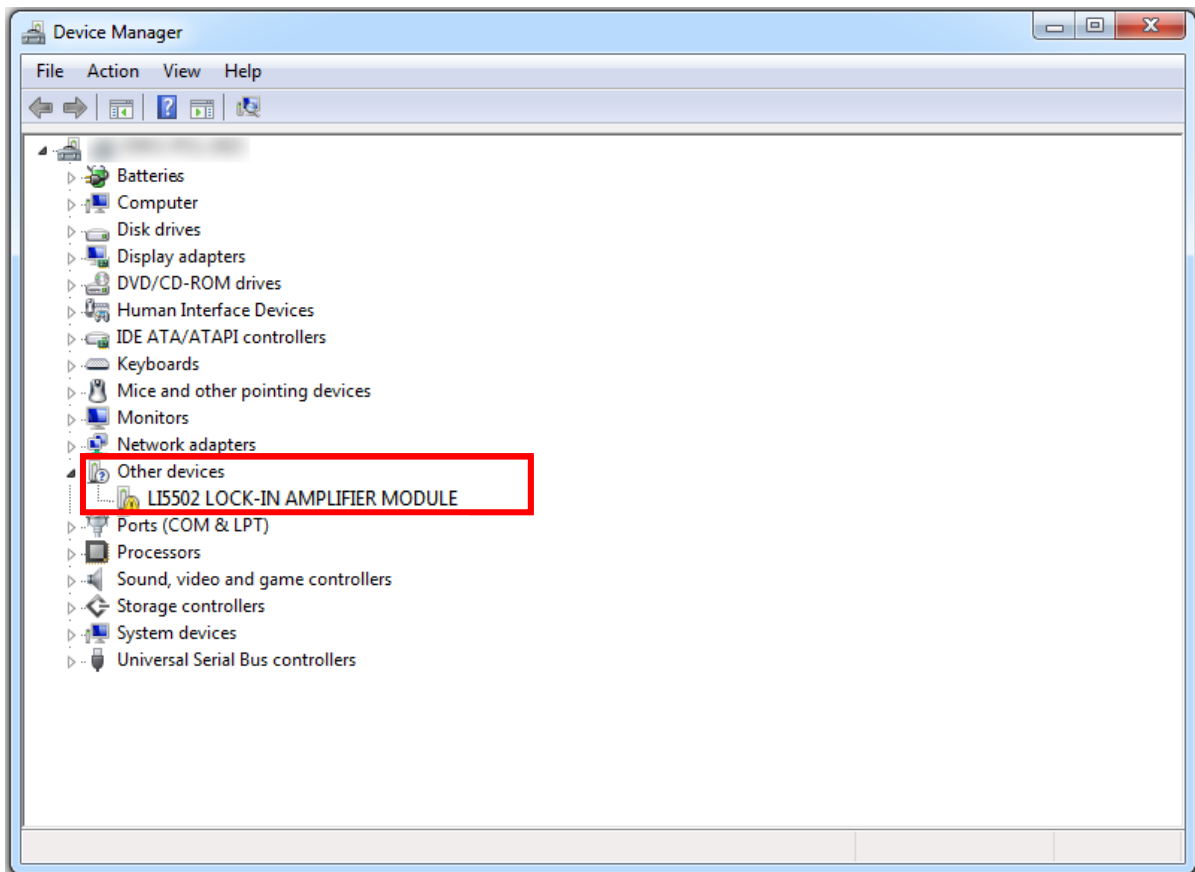
Before installing the USB driver, connect the LI5501 / LI5502 and a PC using a commercial USB cable.

1. Connect a USB Cable to a USB port on a PC.
 2. Power on the LI5501 / LI5502, and connect the USB Cable to the LI5501 / LI5502.
 3. The procedure after that depends on your PC's operating system.
- When using Windows 7 or Windows 8.1, refer to “**2.2 Installation (Windows 7 / Windows 8.1)**”.
 - When using Windows 10, refer to “**2.3 Installation (Windows 10)**”.

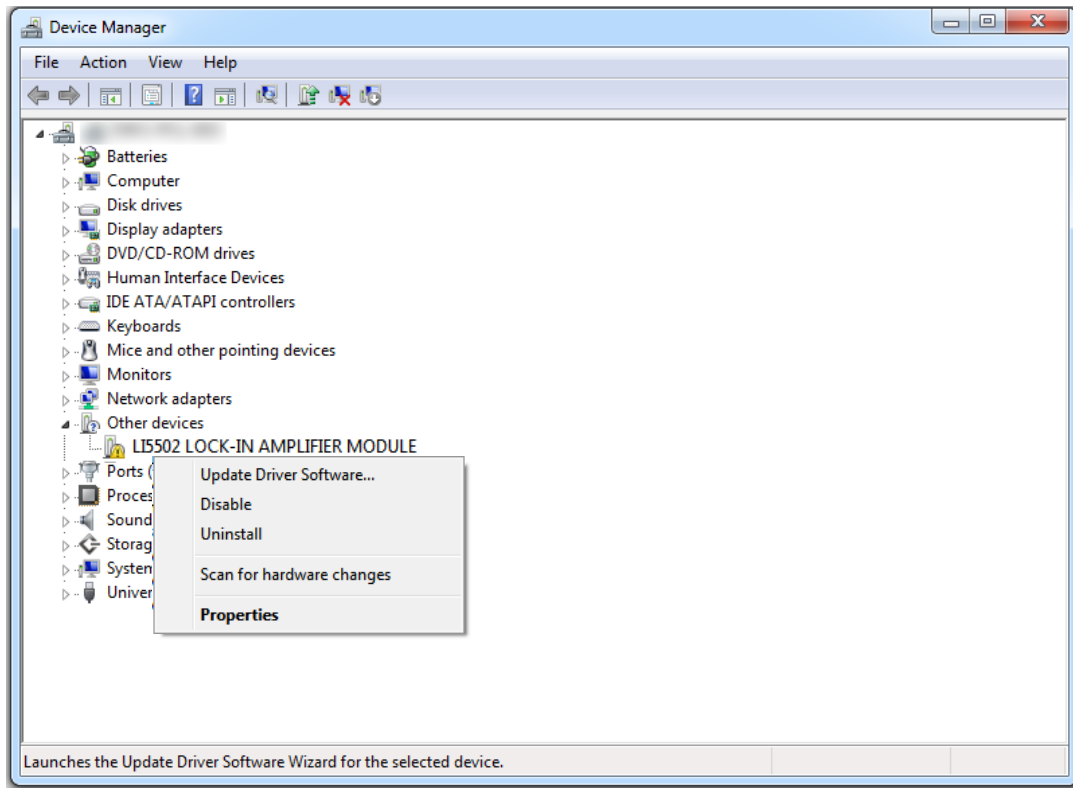
2.2 Installation (Windows 7 / Windows 8.1)

Step 1) Open the Device Manager.

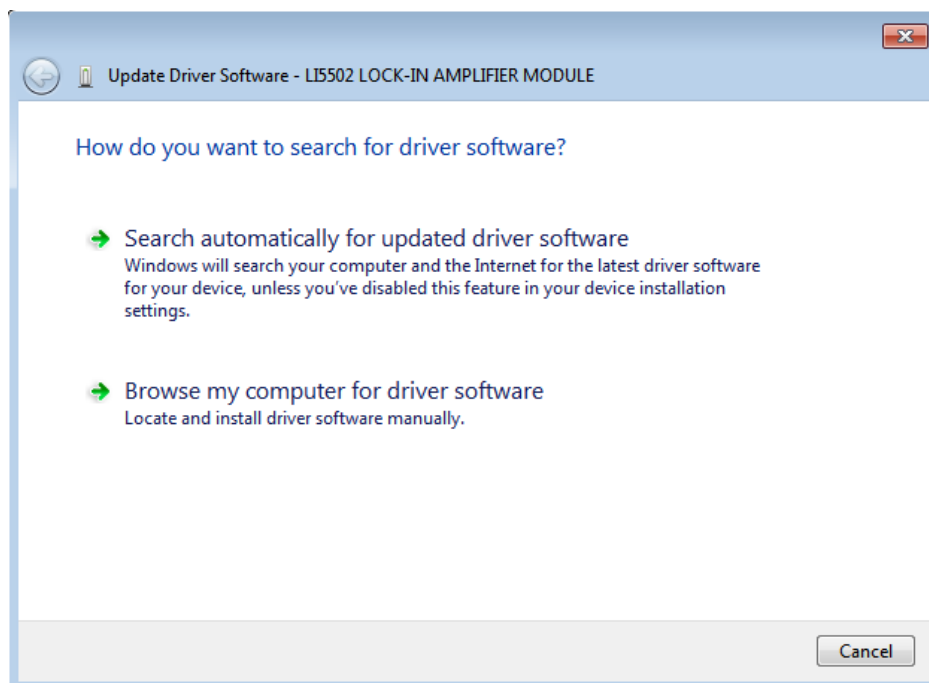
The LI5501 / 5502 will be displayed in the “Other devices” with an exclamation mark (!).



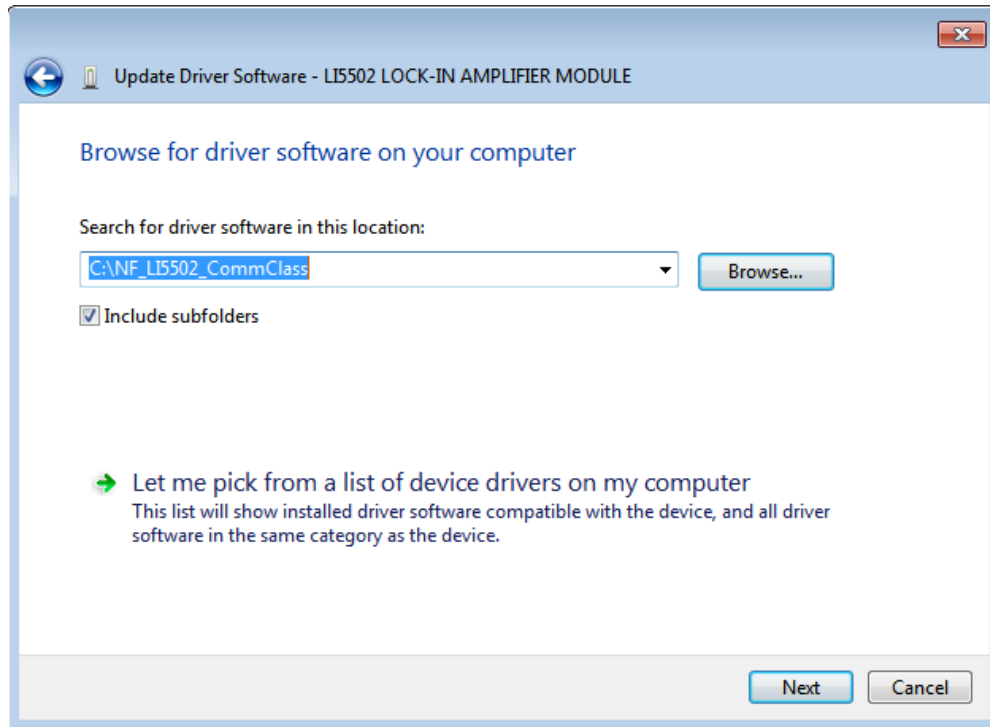
Step 2) Right-click the unknown device with an exclamation mark (!), and select “Update Driver Software...” from the menu.



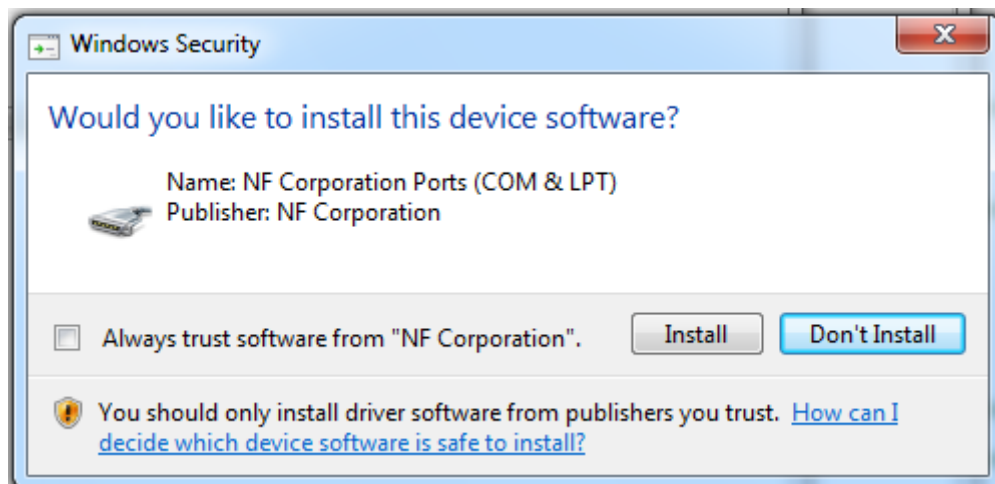
Step 3) When the “Update Driver Software” dialog appears, click “Browse my computer for driver software”.



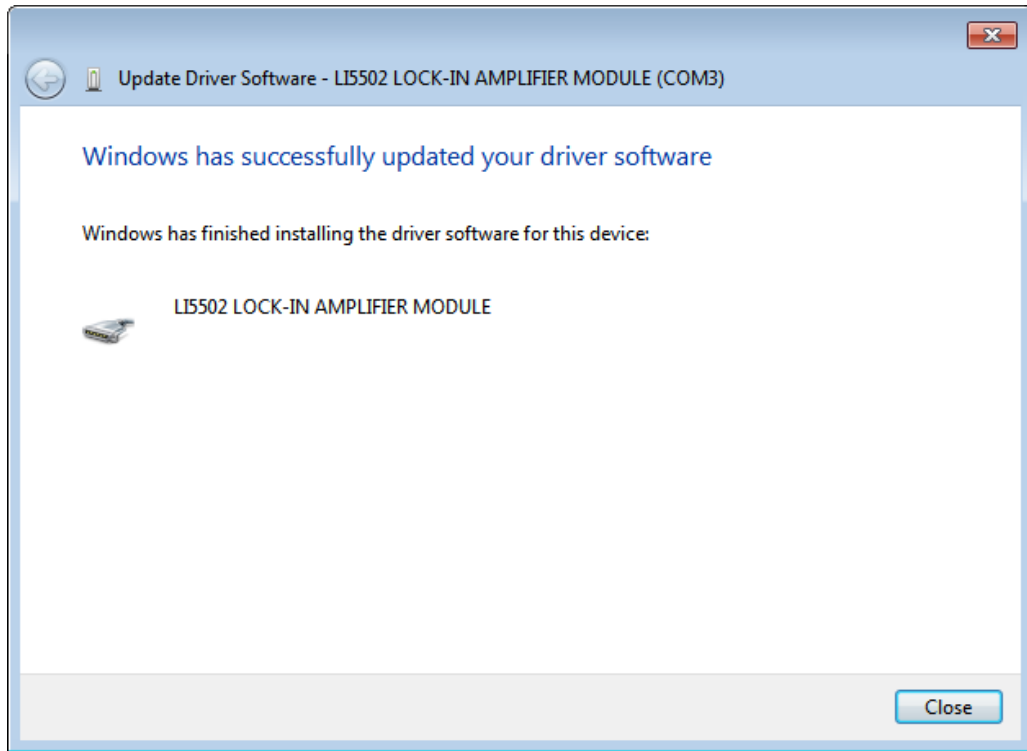
Step 4) Click the “Browse” button, and specify the folder where you have opened the downloaded driver file. Click the “Next” button.



Step 5) Click the “Install” button when the following dialog box appears.

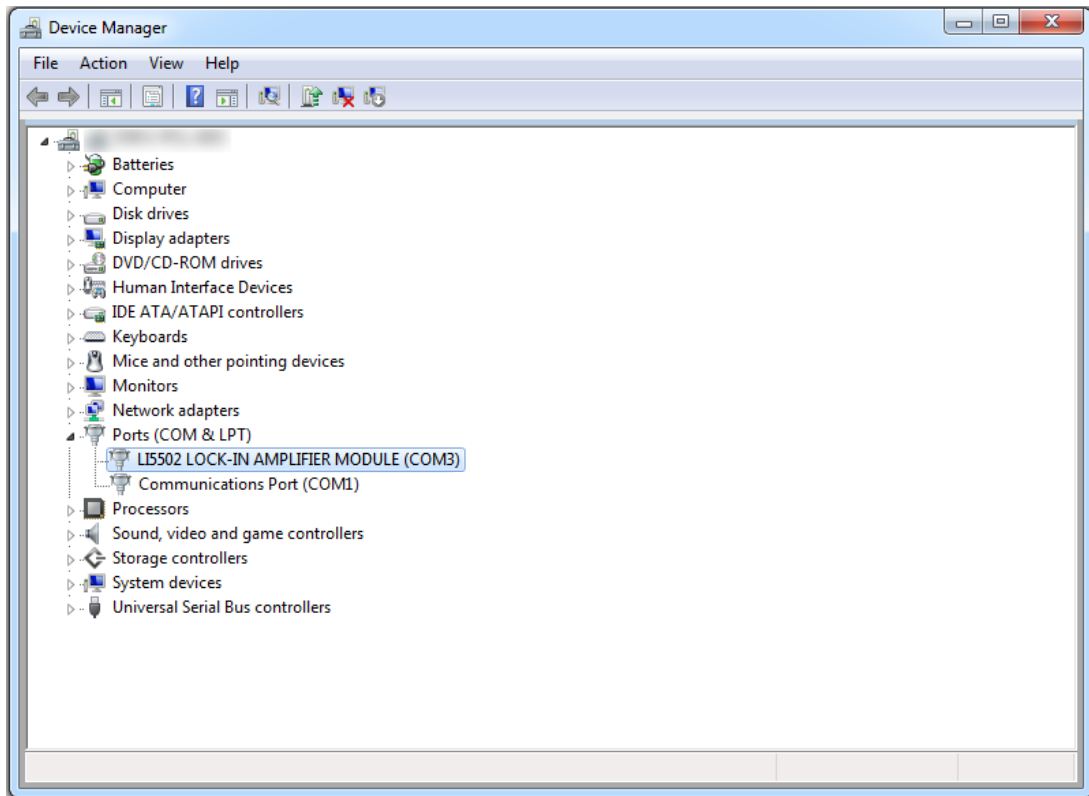


Step 6) When the installation of the driver is complete, click the “Close” button.



Step 7) Check the Device Manager to see if the driver is installed correctly.

As shown in the picture below, check if “LI550x LOCK-IN AMPLIFIER” appears in the “Ports (COM & LPT)” tree.



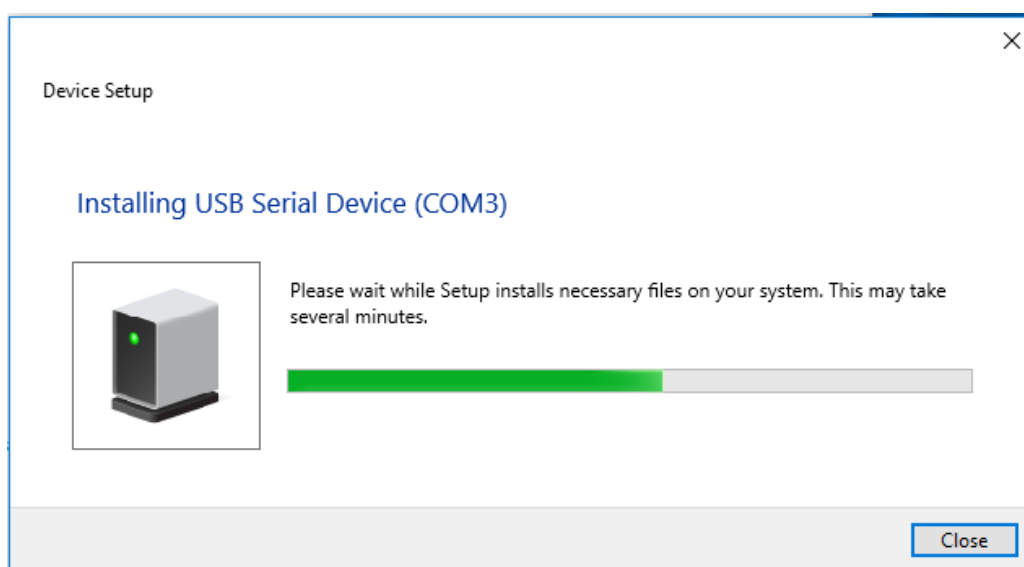
If the driver is not installed correctly (an exclamation mark (!) is displayed), disconnect the USB cable from the LI5501 / 5502. After the Device Manager display is refreshed, reconnect the USB cable to the LI5501 / 5502.

The driver installation is now complete.

2.3 Installation (Windows 10)

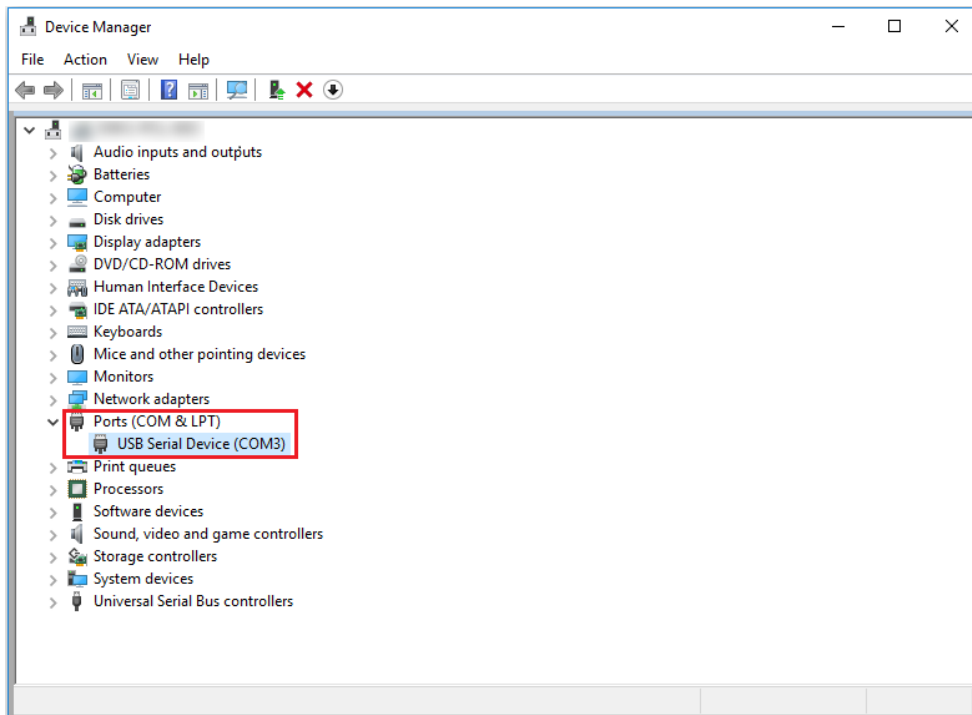
When using Windows 10, the default driver is automatically installed when the LI5501 / 5502 is connected to a PC.

Step 1) When the LI5501 / 5502 is connected to a PC, the following dialog appears.
Wait until this dialog disappears.



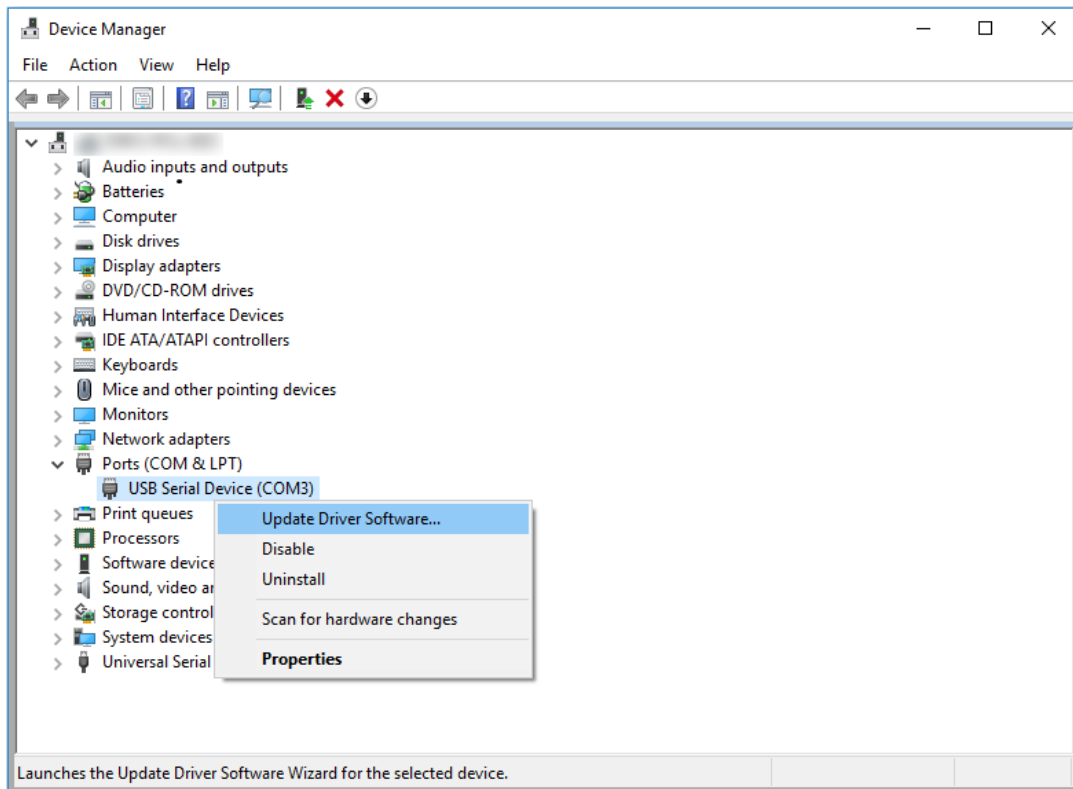
Step 2) Open the Device Manager, and check the installation status of the LI5501 / 5502. Open the “Ports (COM and LPT)” tree and if “USB Serial Device (COM n)” (n is the port number and varies depending on the PC) is added, the default driver has been installed.

If the default driver is not installed correctly, a device with an exclamation mark (!) will appear in the “Unknown devices” tree or “Other devices” and so on.



Step 3) If the default driver is not installed correctly, install the driver made by NF corporation.

Right-click the unknown device with an exclamation mark (!), and select “Update Driver Software...” from the menu.



The following operations are the same as from Step 3) to Step 7) in “**2.2 Installation (Windows 7 / Windows 8.1)**”.

NOTES

- Reproduction of the instruction manual, part or whole, is forbidden without prior written permission.
- The contents of the instruction manual are subject to change without notice.
- Information provided in the instruction manual is intended to be accurate and reliable. However, we assume no responsibility for any damage regarding the contents of the instruction manual.

If you have any uncertainty or you found an error or omission, please contact NF Corporation or one of our representatives from which you purchased the product.

LI5501 / LI5502 USB Driver Installation Manual

NF Corporation

6-3-20 Tsunashima Higashi, Kohoku-ku, Yokohama 223-8508, JAPAN

Phone: +81-45-545-8128

<http://www.nfcorp.co.jp/>

© Copyright 2023, **NF Corporation**

